

The Willows Way



BELONG, *believe*, ACHIEVE
PERTHYN, CREDU, LLWYDDO

Year 8 Option Choice Booklet 2023

Year 8 Option Choices Booklet 2023

Dear Pupil,

You are now approaching one of the most important landmarks in your education so far. It is at the end of Year 8 that you are given the opportunity to make some choices about the subjects you will continue to study in Years 9,10 & 11. It is extremely important that you make these choices when you have considered all the available information.

When you choose a subject, then you are making a promise to undertake all the assessments associated with that course i.e., projects, examinations, oral tests, and coursework. The correct choice of subject and a commitment to the course will lead to success, so take time to get your choices right.

The best reasons for choosing a subject are that you are interested in that subject, that it may be useful in helping you access the next stage of your education and that the model of assessment is suited to the way you learn. Do not choose subjects because you do or don't like a particular teacher or because your friends are choosing it; these are your options and only you can make the choice.

All your teachers are accessible for you to consult over this very important set of decisions. Choose carefully, these are important choices you are about to make.

TIMETABLE OF CHOICE

In the month of January 2022, I will hold a special assembly for year 8 pupils to explain the early options on offer and the examinations and courses which may be taken.

You will be asked to choose one subject from the Expressive Arts and Wellbeing Option Column, and you will study a compulsory subject from the Life Skills option. Please rank your preference with 1 being the option you would most like to do and 2 being your second-best option. I will try to allocate your first choice. This is not always possible, if not I will come to see you personally to discuss your options.

Your option choice form is attached to the back of this booklet and should be returned to your form tutor by **March 24th, 2022, at 3PM or emailed at victoria.cook@willows.cardiff.sch.uk**. Please keep a copy of your choice.

There will then need to be a period of individual discussions. Some courses will have too many pupils, others too few, in which case discussions will be held with the pupils concerned who may be asked to take their second choice.

PROGRESSION AND SUPPORT

You will be supported throughout by a team of experienced staff. These include:

A Form Tutor – fully conversant with subject and curriculum.

A welfare officer – fully conversant with target grades; tracking and ensuring you meet your potential and stay on track.

A Career Specialist (Mr. A. Roberts) - offering on-going support with all aspects of life during and after GCSEs.

Any member of our team is available to meet with pupils and parents/carers to discuss options at any stage.

Compulsory subjects

All students follow courses in the core subjects of:

English Language

English Literature

French

Geography

History

IT

Mathematics

Music

Physical Education

Religious Studies

PSE/RSHE/Wellbeing and Character

Technology

Science

Welsh/Agored Cymru Level 2 Certificate in Wales, Europe and the World

Life Skills

Life Skills Compulsory Module (responsible Mrs. L Williams)

As we are approaching our new Wales curriculum, we have created the Life Skills option with the aim for all our pupils to be:

Ambitious, capable learners who:

- set themselves high standards and seek and enjoy challenge
- are building up a body of knowledge and have the skills to connect and apply that knowledge in different contexts
- are questioning and enjoy solving problems
- can communicate effectively in different forms and settings, using both Welsh and English
- can explain the ideas and concepts they are learning about

- can use number effectively in different contexts
- understand how to interpret data and apply mathematical concepts
- use digital technologies creatively to communicate, find and analyse information
- undertake research and evaluate critically what they find and are ready to learn throughout their lives

Enterprising, creative contributors who:

- connect and apply their knowledge and skills to create ideas and products
- think creatively to reframe and solve problems
- identify and grasp opportunities
- take measured risks
- lead and play different roles in teams effectively and responsibly
- express ideas and emotions through different media
- give of their energy and skills so that other people will benefit and are ready to play a full part in life and work

Ethical, informed citizens who:

- find, evaluate and use evidence in forming views
- engage with contemporary issues based upon their knowledge and values
- understand and exercise their human and democratic responsibilities and rights
- understand and consider the impact of their actions when making choices and acting
- are knowledgeable about their culture, community, society and the world, now and in the past
- respect the needs and rights of others, as a member of a diverse society
- show their commitment to the sustainability of the planet and are ready to be citizens of Wales and the world

Healthy, confident individuals who:

- have secure values and are establishing their spiritual and ethical beliefs
- are building their mental and emotional well-being by developing confidence, resilience and empathy
- apply knowledge about the impact of diet and exercise on physical and mental health in their daily lives
- know how to find the information and support to keep safe and well
- take part in physical activity
- take measured decisions about lifestyle and manage risk
- have the confidence to participate in performance
- form positive relationships based upon trust and mutual respect
- face and overcome challenge
- have the skills and knowledge to manage everyday life as independently as they can
- and are ready to lead fulfilling lives as valued members of society.

Life Skills is a 3-year compulsory suite comprising three qualifications that, if complete, will deliver an equivalent of three GCSEs. Miss Lucy Williams is responsible for leading this subject. The information below outlines the content of this qualification suite:

LIBF Level 2 Certificate in Financial Capability and Careers Development

What does this qualification cover?

This qualification provides an introduction to, and preparation for, further study through developing an understanding of the economy, financial management skills, employability and enterprise. It provides students with the skills and knowledge to manage their money well and make sound financial decisions with regards to budgeting, spending and borrowing.

The qualification introduces pupils to the impact of finance on the economy and encourages them to consider how this can affect business and the individual. Through this, it develops knowledge and a valuable range of applied and transferable skills and provides a foundation for further study in business and finance-related disciplines, as well as a wide range of other fields that are encapsulated in programmes of study related to social enterprise and vocational professional development (eg self-employed hairdressers, taxi drivers, garden landscapers).

Who is it suitable for?

The content covered, and skills developed, within the qualification ensure that it is a valuable part of a broad programme of study at Key Stage 4, particularly complementing GCSE Mathematics. Beyond Key Stage 4, it can also complement A Level programmes or vocational programmes at Level 2 or 3 as an additional course of study that broadens and deepens understanding of the financial context of other content areas.

NCFE CACHE Level 2 Certificate in Understanding Nutrition and Health

What does this qualification cover?

This qualification aims to increase an understanding of healthy eating and the role of food in maintaining health. It aims to increase pupils' confidence in planning and achieving a healthy diet by providing an understanding of how an individual's dietary requirements change throughout their life. Pupils learn to understand food labelling and gain the ability to use information from food labels. The course also provides information on eating disorders and increases understanding of the principles of food safety in a home environment.

Who is it suitable for?

The content covered, and skills developed, within the qualification ensure that it is a valuable part of a broad programme of study at Key Stage 4, particularly complementing GCSE Science and Hospitality and Catering. Beyond Key Stage 4, it can also complement A Level programmes or vocational programmes at Level 2 or 3 as an additional course of study that broadens and deepens understanding of the food industry or dietetics.

Agored Cymru Level 2 Certificate in Personal and Social Education

What does this qualification cover?

Agored Cymru's Personal and Social Education (PSE) qualification provides learners with a real, meaningful foundation of skills and knowledge, supporting them to increase their skills and knowledge to improve their personal and social development and emotional health and wellbeing. This ensures that pupils become equipped and confident individuals so that they can effectively and successfully live in a fast-changing society and fulfil their ambitions.

The qualification encompasses units of study in Ethics and Morality, Equality and Diversity, Mental Health and Wellbeing, Understand the Effects of Alcohol Consumption, Globalisation and Beliefs and Values.

Who is it suitable for?

Learners undertaking this qualification will benefit from developing a broad base of personal and social skills to empower them to take an active role in society and build their self-esteem and personal development skills. The content covered, and skills developed, within the qualification ensure that it is a valuable part of a broad programme of study at Key Stage 4. Beyond Key Stage 4, it can also complement vocational programmes at Level 3 in PSE or Personal Development.

The Expressive Arts and Wellbeing option (Pick one subject)

Pupils in the expressive and creative art option are encouraged into studying a qualification that can spring a future interest in the creative industries. At Willows if you're interested in using your creativity in a different industry, you've got plenty of options. Careers in areas ranging from retail and business to engineering call for creativity along with other skills such as commercial awareness, teamwork and problem solving.

What are the creative industries?

These are some career areas that are generally thought of as creative:

- Acting
- Advertising and marketing, particularly areas such as copywriting and content writing
- Architecture
- Art and design, including product, graphic and fashion design, artist, and art gallery curator
- Crafts, for example ceramic pottery maker, furniture maker or tailor
- Film
- TV and radio, including broadcast production

- Photography and video
- Editorial careers in publishing
- Journalism, depending which area you work in
- Museums and libraries, for example curator or library assistant
- Careers involving writing
- Careers in theatre
- Music, such as working as a musician, classical singer or actor-musician
- Doctors
- Physiotherapists
- Nursing
- Caring
- Childminding
- Coaching
- Professional sport

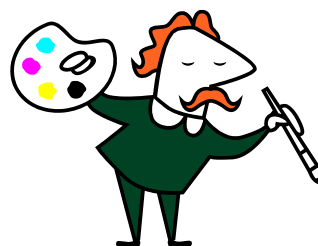
The Expressive arts and wellbeing option is a 3-year option and offers a mix of qualification suited to accommodate the needs of the Welsh creative and caring industry.

GCSE Art and Design WJEC / ABC Award in Art

Course Introduction:

Have you got:

- An interest in drawing, painting, printing etc.,
- An interest in making things,
- A curiosity about the environment around you,
- An ability to research information and communicate ideas.



Yes?

Then you should consider Art and Design as an option for GCSE

The course involves more than just learning and developing practical skills. It will help you notice, question, control the appearance of everything around us.

The syllabus covers the following:

Drawing / Painting / Printmaking / 3D – clay / Sculpture / Batik

Assessment:

Coursework = 60% you will complete a sketchbook of studies for each unit aswell as large scale work.

Practical examination = 40% you will complete a sketchbook of studies and a final piece of your choice.

Career Options:

After completing a GCSE in Art and Design there are a number of courses, which you could undertake in order to specialise in this subject. The following careers require study in Art and Design:

Advertising	Community Art	Theatre	Graphic Design
Illustration	Fashion	Publishing	Art Therapy
Decorator	Artist	Teacher	Interior Designer

Should you wish to continue with Art after year 11 you can go on to do an 'A' level or a BTEC course in order to develop your understanding\training within the subject.

You will be graded as either a pass or fail.

GCSE Photography WJEC

Course Introduction:

Have you got:

- An interest in taking photographs?
- An interest in thinking creatively?
- A curiosity about the environment around you?
- An ability to research information and communicate ideas?

Yes?

Then you should consider Photography as an option for GCSE

The course involves more than just learning and developing practical skills. It will help you notice, question, control the appearance of everything around us.

Assessment:

Coursework = 60% you will complete a sketchbook of studies for each unit as well as large scale work.

Practical examination = 40% you will complete a sketchbook of studies and a final piece of your choice.

Career Options:

After completing a GCSE in Photography there are a number of courses, which you could undertake in order to specialise in this subject. The following careers require study in Art and Design:

Advertising	Community Art	Theatre	Graphic Design
Illustration	Fashion	Publishing	Art Therapy
Decorator	Artist	Teacher	
Interior Designer			

Should you wish to continue with Art after year 11 you can go on to do an 'A' level or a BTEC course in order to develop your understanding\training within the subject.



ABC Award in Art, Design and Creative Studies - Certificate (BTEC ART) LEVEL 2 (Photography)

If you love “getting creative” and are considering a career working in the Art Industry as an Artist / Designer (fashion, graphics, interiors, gaming designer) or Art teacher then this practical Art course will suit you brilliantly!

If you enjoy Art and being creative and would like to do an exciting and practical course, then read on:

This course counts as **2 GCSE Grade Bs (46 points)** and will be divided into four compulsory units.

Unit 1: Investigating Information and developing research techniques

You will study + research a theme showing personal development and ideas using a variety of Art materials and Techniques to communicate your ideas to others.

Unit 2: Developing and handling media and materials

You will explore further different types of Art materials and Techniques and be aware of the health and safety requirements. You will also develop your drawing and making skills.

Unit 4: Recognising and applying visual language and formal elements within production techniques

You will learn about specialised areas of Art through practical work. You will also study the work of other Artists, Craft workers and Designers and will show their inspiration and influence in your personal ideas and experimentation work.

Unit 4: Working to set briefs

Your design ideas will be developed and finalised based on the set brief and using your personal research and ideas undertaken in the earlier units. A final piece of Art work will be produced and evaluated in the form of a written evaluation.

The course is designed to be highly practical with a small element of theory in all three units of work and you will have the opportunity to develop your design and making skills in a creative and positive environment.

Art materials and processes/techniques that you maybe using: Taking pictures, using a variety of different lenses and techniques, manipulating photographs taken.

Assessment:

100% Coursework!

There is no written exam, the course is graded on your portfolio of Photography work produced in class and on the final pieces.

You will be graded as either a pass or fail.

BTEC/GCSE Music (BTEC worth 2Bs)

Course Introduction:

Want to know how to write a song that will make you a million or how to perform music that will make you even more? Then read on

If you chose this course you will:

- * Listen and learn how to understand music from Schuman to Snoop Dog
- * Perform vocally and on a variety of instruments including keyboards
- * Compose your own music and songs

Music equips you for life because you learn how to: -

- * make decisions
- * develop your confidence
- * work as part of a group
- * stretch your imagination
- * improve your listening skills
- * make effective use of leisure time

Assessment:

- You will compose 5 pieces and submit the best 2
- You must be prepared to sing or play 2 pieces
- You will sit a 1 hour 30min listening examination

Career Options:

A course in music could lead to a future in the entertainment industry as a:-

- * Composer - writing advertisements jingles or the next No 1
- * Performer - be the next Charlotte Church or the latest chart sensation
- * Technician - DJ, record producer or sound engineer

Btec Level 2 Extended Certificate in 'Personal Growth and Wellbeing' (SWEET) (worth 2 B grades)

This Level 2 qualification in Personal and Social Development builds on learners' strengths and teaches them the personal skills and techniques needed to progress to working life. Learners who achieve these qualifications will gain confidence and self-esteem for employment and be able to progress to level 3 BTEC qualifications.

Sweet* is a range of innovative resources that support learners to develop important life and employability skills, and to achieve a fully accredited Pearson Edexcel BTEC qualification in Personal and Social Development

Sweet* BTEC Level 1 and Level 2 in Personal and Social Development

The resource combines key themes from the PSE Curriculum including:

- Understanding Personal Identity
- Managing Relationships
- Healthy Living
- Moving Forward
- Money Matters

Complete teaching and learning support, and resources for the Welsh Baccalaureate Skills Challenges including Community, Enterprise and Global Citizenship are also included.

Level 1 will give you the equivalent of a GCSE grade E

Level 2 will give you the equivalent of a GCSE grade B

For any more information, please ask Mr Sage.

BTEC Level 2 Tech Award in Performing Arts (Acting)

What does this qualification cover?

The course is made up of three components: two that are internally assessed and one that's externally assessed. The three-block structure, explore, develop and apply, has been developed to allow students to build on and embed their knowledge. This allows them to grow in confidence and then put into practice what they have learned. The assessment structure is also designed so that students can build on what they learn, and develop their creative skills, as they move through the course.

Explore

Component 1
Exploring the Performing Arts

Aim: get a taste of what it's like to be a professional actor, dancer or musical theatre performer.

Assessment: internally assessed assignments

Weighting: 30% of total course

During Component 1, your students will:

- **explore** performance styles, creative intentions and purpose
- **investigate** how practitioners create and influence what's performed
- **discover** performance roles, skills, techniques and processes.

Develop



Component 2

Developing Skills and Techniques in the Performing Arts

Aim: develop skills and techniques in the chosen discipline(s) of acting, dance and musical theatre.

Assessment: internally assessed assignments

Weighting: 30% of total course

During Component 2, your students will:

- **take part** in workshops, classes and rehearsals
- **gain** physical, interpretative, vocal and rehearsal skills
- **apply** these skills in performance
- **reflect** on their progress, their performance and how they could improve.

Apply



Component 3

Performing to a Brief

Aim: consider how practitioners adapt their skills for different contexts, and put this into practice in a performance.

Assessment: externally assessed task, where students work in groups of between 3 and 7 members to create a performance based on a set brief.

Weighting: 40% of total course

To achieve this aim, your students will:

- use the brief and previous learnings to come up with ideas
- build on their skills in classes, workshops and rehearsals
- review the process using an ideas and skills log
- perform a piece to their chosen audience
- reflect on their performance in an evaluation report.

What are your options for progression after the course?

After completing their BTEC Tech Award, you will be in a great position to continue in the performing arts sector. This qualification prepares you for both practical and academic routes.

WJEC Level 1/2 Award Hospitality and Catering

The hospitality and catering sector includes all businesses that provide food, beverages, and/or accommodation services. This includes restaurants, hotels, pubs and bars. It also includes airlines, tourist attractions, hospitals and sports venues.

The WJEC Level 1/2 Award in Hospitality and Catering has been designed to support learners in schools and colleges who want to learn about this vocational sector and the potential it can offer them for their careers or further study.

WJEC Level 1/2 Award in Hospitality and Catering consists of

Unit 1: The Hospitality and Catering Industry will be externally assessed.

- An assignment will be produced each academic year and cannot be opened before May each year
- It is a six hour timed, supervised assessment

Unit 2: Hospitality and Catering in Action is internally assessed

- Units are assessed through summative controlled assessment
- Controls for assessment of each internally assessed unit are provided in a model assignment

Learners must complete both units.

Career Options

Where the WJEC Level 1/2 Award in Hospitality and Catering is achieved together with other relevant Level 2 qualifications, such as GCSEs in English and Maths and Science, learners may be able to access Level 3 qualifications relevant to the hospitality and catering sector, such as:

- WJEC Level 3 Food, Science and Nutrition
- GCE in Home Economics / Design and Technology (Food Technology)
- Level 3 Diploma in Hospitality and Tourism Management (VRQ)
- Level 3 Diploma in Hospitality, Supervision and Leadership principles (QCF)
- Level 3 Certificate in Hospitality and Catering Principles (professional cookery)
- Level 3 Award in Practical Food Safety Supervision for Catering (QCF)

Certificate in Leadership Through Sport (worth 2 Bs)

Edexcel BTEC Level 2 Certificate in Leadership Through Sport

Planning and Leading Sports Activities

This unit will give learners the knowledge and skills to be able to plan and lead a range of practical sports activities. The unit content can be adapted to suit a range of activities for different individuals. The unit looks at the skills and qualities needed for effective sports leadership. Learners will identify the qualities required by studying real examples of successful leaders, possibly those they have worked with or observed in the community. The unit requires learners to follow the planning process involved in developing a sports leadership session and event. Learners will then have the opportunity to put this into practice in the organisation and delivery of an activity session and sports event. Learners may also be able to identify and develop leadership qualities and skills through their own relationships with their peers.

Lifestyle and the Sports Performer

This unit gives learners the knowledge and skills to adopt a lifestyle appropriate to an elite athlete. It is aimed at individuals competing at a high level. The first part of the unit looks at time management. It involves learners planning and prioritising work commitments such as training, competition and other types of employment and education. It also involves learners making good use of their leisure time, ensuring that leisure activities do not interfere with their performance. Pressure from peers, coach/support staff and family are investigated and strategies to cope with these pressures are discussed. Appropriate behaviour in a range of situations, including training, competition, at home and at social functions, is discussed.

The second part of the unit looks at career management, communicating effectively and working with others. Financial management and first and second career choices are explored. Effective communication skills and working relationships are examined and put into practice. Media interviews are also planned and carried out.

Planning and Running a Sports Event

The first part of the unit will give learners the opportunity to take part in planning a sports event. They will investigate all aspects of planning a variety of sports events before applying this knowledge to plan their own event. The 'event' will be a small-scale, one-off event that requires a significant amount of planning and organisation over a period of time. The type of event may include a sports competition or activity day. Alternatively, an event may be generated specifically for this unit, such as the organisation of an educational sports event, a summer sports training camp or a sports charity dinner/fundraiser.

After undertaking the planning process, learners will have the opportunity to participate in the running of the actual event, enabling them to put their planning into practice.

Throughout the unit learners will be able to develop their individual roles as well as being part of a team. They will need to keep records of meetings, consider the problems that may arise and suggest how to respond to them.

BTEC Sport is the equivalent of a GCSE and comprises of 2 modules:

Development of personal fitness

In this module you will learn how to plan and implement a 6-week personal fitness training programme. You will then evaluate the training programme and determine whether or not it was successful. You will also gain an understanding of what personal adherence factors (reasons why people don't exercise regularly) are and how to overcome them.

Practical Sport

In this module you will be required to demonstrate the skills used for 1 team sport and 1 individual sport. You will also need to have knowledge of the tactics, the role of the officials and the rules and regulations of those sports. You will also learn how to analyse a players' performance, to look for their strengths and weaknesses.

Assessment:

The programme is assessed through 100% assignment work and has no formal examination

Career Options:

Interested in a career in the leisure industry? Fancy working as a PE teacher, sports coach, joining the armed forces, working for the police or any other of the public services? If so then this could be the course for you.

GLOBAL BUSINESS COMMUNICATION (FRENCH)

This option choice is a Level 2/Level 1 qualification available at grades Distinction * - Pass (equivalent to A*-G).

This option will **only** be available to you in Year 8. If you choose Global Business Communication you will study this in Year 9-11. All pupils will still study French in Year 9 and you will be able to choose French GCSE as an option for years 10-11. If you wish to study French for A Level or as a degree it would be better to choose French GCSE at the end of Year 9.

Global Business Communication allows you to study the practical French that would be of benefit to you in the workplace both in the UK and overseas. Despite, or perhaps even because of Brexit, people with language skills are more in demand than ever. British businesses still need to trade overseas but often lack the language skills that they need to do this successfully. People with a language qualification can find it easier to secure a job and can earn up to 20% more throughout their career because of this skill.

So what will I learn in Global Business Communication?

Unit 1 enables you to gain knowledge and understanding of the benefits of language skills in a global economy both for you and for businesses. You will develop the skills to be able to identify and apply for jobs in French.

Unit 2 enables you to gain knowledge and understanding of the importance of building customer relationships in a global market. You will develop skills to be able to respond to and make customer enquiries, feedback and complaints in French.

Unit 3 enables you to gain knowledge and understanding of the principals of global marketing and some of the different strategies that can be used. You will develop an understanding of the use of social media to promote and sell products and services in global markets in French.

Unit 4 introduces you to planning and undertaking global travel. You will develop knowledge and understanding of how to research and book accommodation. You will gain cultural knowledge about various transport methods in France and understand travel information relating to places in a town or city, weather updates and transport issues in French.

Here are the units and assessments in more detail.

<p>Unit 1 – Global Opportunities Internally assessed on reading, writing and speaking (6 hours to complete in class time)</p> <p>25% of final grade</p>	<p>1.1 Benefits of language skills in the global workplace 1.1.1 The personal benefits of language skills 1.1.2 The importance of language skills for businesses in a global marketplace</p> <p>1.2 Workplace communication in French 1.2.1 Greetings and introductions 1.2.2 Communication using telephone and internet 1.2.3 Email communications</p> <p>1.3 Job opportunities in French 1.3.1 Different types of jobs in the workplace 1.3.2 Job adverts in French</p> <p>1.4 Applying for a job in French 1.4.1 Curriculum Vitae (CV) in French 1.4.2 Covering letter and Personal Statement in French</p> <p>1.5 Interview and presentation skills in French 1.5.1 Interview preparation in French 1.5.2 Interview skills in French</p>
<p>Unit 2 – Global Customer Relations Internally assessed on reading, writing, speaking and listening. (7 hours to complete in class time)</p> <p>25% of final grade</p>	<p>2.1 Developing customer relationships 2.1.1 How to build customer relationships 2.1.2 Cultural awareness</p> <p>2.2 Customer enquiries, feedback and complaints 2.2.1 Receiving customer enquiries 2.2.2 Gathering customer feedback 2.2.3 Dealing with customer complaints</p> <p>2.3 Customer visits 2.3.1 Visiting an organisation or trade fair 2.3.2 Organising customer invitations</p> <p>2.4 Global business digital platforms 2.4.1 Website content 2.4.2 Social Media Business sites</p>
<p>Unit 3 – Global Marketing and Sales Internally assessed on speaking, reading and writing (6 hours to complete in class time)</p> <p>25% of final grade</p>	<p>3.1 What is Global Marketing? 3.1.1 Key elements of a global marketing strategy 3.1.2 Standardisation and adaptation</p> <p>3.2 Global marketing strategies in French 3.2.1 Approaches to global marketing 3.2.2 Social media</p> <p>3.3 Global Marketing Materials in French 3.3.1 Describing the key features of different products and services 3.3.2 Creating marketing materials in French</p> <p>3.4 Presenting a product or service in French 3.4.1 Content for selling products/services globally 3.4.2 Sales pitches</p>

<p>Unit 4 – Global Travel</p> <p>Externally assessed on reading, writing and listening (1.5 hours to complete in class time)</p> <p>25% of final grade</p>	<p>4.1 Planning a business trip</p> <p>4.1.1 Factors to consider when planning international travel</p> <p>4.1.2 Sources of travel information and guidance</p> <p>4.2 Researching accommodation and transport in French</p> <p>4.2.1 Accommodation and facilities</p> <p>4.2.2 Places to visit in a city or town</p> <p>4.3 Booking accommodation in French</p> <p>4.3.1 Booking accommodation</p> <p>4.3.2 Accommodation reviews</p> <p>4.4 Travel information and directions in French</p> <p>4.4.1 Local travel</p> <p>4.4.2 Transport problems and delays</p> <p>4.4.3 Weather reports</p>
------------------------------------------------------------------------------------------------------------------------------------------------------------	-----------------------------------------------------------------------------------------------------------------------------------------------------------------------------------------------------------------------------------------------------------------------------------------------------------------------------------------------------------------------------------------------------------------------------------------------------------------------------------------------------------------------------------------------------------------------------------------------------------------------------

Although this is a new subject at Willows, here are some thoughts of pupils from other schools who have studied GBC;

‘As well as learning how to communicate in a different language in the world of business, I also learned skills that I have since carried over to other subject areas and aspects of life. For example, I was taught how to properly conduct myself when giving a presentation and I can now use this in my A Level subjects as well as any careers that I wish to have in the future.’

‘I would highly recommend this course to students, especially if you are unsure of what you wish to do in the future. Not only does it give you a taste of how businesses work, but it also gives you the invaluable skill of having learned a language.’

‘One advantage of choosing this option was that instead of doing a final exam at the end, you are assessed through coursework set throughout the year. At first this does seem like a lot of work, especially compared to your peers who are studying different subjects.

But at the end of the day, I found it much easier to complete the assessment soon after I had done the topic, rather than having to revise it all for a final exam.’

We hope that you will consider choosing Global Business Communication in Year 9. If you have any questions then please ask Madame Brace or Madame Vrigneau.

Option Teachers

Expressive Arts and Wellbeing	Teacher
Art GCSE/ABC Level 2 in Cert. Art and Design (equivalent to 2B)	Mrs. A Jones/Ms. E Jones
WJEC Level 1/2 Award in Hospitality and Catering (equivalent to an A*)	Mrs. R Davies/Ms. S Burnell
Pearson BTEC Level 2 Certificate in Leadership Through Sport (equivalent to 2 B grades)	Mr. A Roberts
Pearson BTEC Level 2 Certificate in Music for Practical Performance (equivalent to 1B)/GCSE Music	Mr. F George
Btec Level 2 Extended Certificate in 'Personal Growth and Wellbeing' (SWEET) (equivalent to 2B grades)	Mr. J Smith (subject supervisor)
Btec Performing Art (equivalent to 1 B grade)	TBD
Photography GCSE	Ms. A Jones
Global Business Communication (French)	Mrs. J Brace

Year 8 Options Return 2023 (my example)

Having read this book carefully, it is now time to choose your pathway. From September, you will study 1 subject from the option column. Please rank your preference with **1** being the option you would like the most to do and 2 being your second-best option if you cannot get your first choice. Here below, I drafted an example where I picked the Photography as my favourite subject (1) and should I not get it, I picked Global Business Communication (French) (2).

Expressive Arts and Wellbeing	Rank	Rank
Art GCSE/ABC Level 2 in Cert. Art and Design (equivalent to 2B)		
WJEC Level 1/2 Award in Hospitality and Catering (equivalent to an A*)		
Pearson BTEC Level 2 Certificate in Leadership Through Sport (equivalent to 2 B grades)		
Pearson BTEC Level 2 Certificate in Music for Practical Performance (equivalent to 1B)/GCSE Music		
Btec Level 2 Extended Certificate in 'Personal Growth and Wellbeing' (SWEET) (equivalent to 2B grades)		
Btec Performing Art (equivalent to 1 B grade)		
Photography GCSE	1	
Global Business Communication (French)		2

Year 8 Options Return 2023 (For you to hand in)

Name: _____

Tutor Group: _____

Having read this book carefully it is now time to choose your pathway. From September you will study 1 subject from the option column. Please rank your preference with **1** being the option you like the most and **2** being your second-best option if you don't get your first choice.

Expressive Arts and Wellbeing	Rank	Rank
Art GCSE/ABC Level 2 in Cert. Art and Design (equivalent to 2B)		
WJEC Level 1/2 Award in Hospitality and Catering (equivalent to an A*)		
Pearson BTEC Level 2 Certificate in Leadership Through Sport (equivalent to 2 B grades)		
Pearson BTEC Level 2 Certificate in Music for Practical Performance (equivalent to 1B)/GCSE Music		
Btec Level 2 Extended Certificate in 'Personal Growth and Wellbeing' (SWEET) (equivalent to 2B grades)		
Btec Performing Art (equivalent to 1 B grade)		
Photography GCSE		
Global Business Communication (French)		

This form should be detached from the booklet and handed to your form tutor **by 3pm on Friday March 24th 2022** or email your choice to Victoria.cook@willows.cardiff.sch.uk. There is no first come first served allocation. However, if your form is late, **priority will be given to pupils who handed it in on time**. If you have any questions, please get in touch with Mr. Lo Celso (Marcello.locelso@willows.cardiff.sch.uk) who is our curriculum coordinator.

You can also complete the choice through the website

<https://www.willowshigh.co.uk/year-8-options-2022-2023/>